

CTS COMPOSITE HOSE FITTINGS

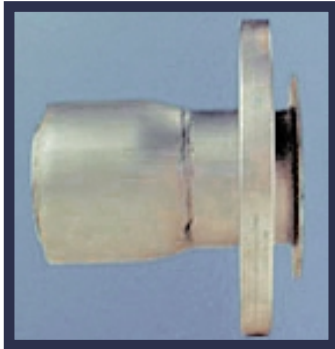
All CTS hose end fittings are reusable and are attached with the superior external swaging method. Fittings in other material combinations or to customer's specifications are available upon request. Special fittings include amongst others dry-break couplers, emergency release couplers and isolated couplers according special standards.

LARGE BORE COMPOSITE HOSES:



Fixed Flanges ASA or DIN or TTMA

Size: 1" to 12"
 Material: Carbon Steel or Stainless Steel
 Attachment: Carbon Steel Ferrule



Floating Flanges ASA or DIN or TTMA

Size: 1" to 12"
 Material stub end: Carbon Steel or Stainless Steel
 Material flange: Carbon Steel or Stainless Steel
 Attachment: Carbon Steel Ferrule

SMALL BORE COMPOSITE HOSES:



Male threaded nipple NPT or BSP

Size: 1" to 4"
 Material: Carbon Steel or Stainless Steel
 Attachment: Carbon Steel Ferrule



Female threaded swivel nut coupling NPT or BSP

Size: 1" to 4"
 Material: Carbon Steel or Stainless Steel
 Attachment: Carbon Steel Ferrule



CTS HOSE HANDLING SLINGS



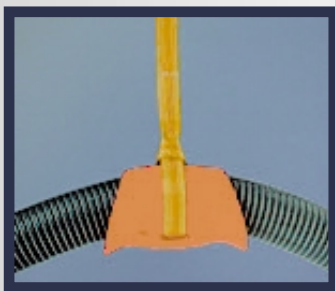
HOSE HANDLING SLINGS

When applying CTS 'Heavy Duty' loading and unloading hoses (ship to shore applications), the use of at least one wide support sling is necessary. We recommend one sling for hoses with a maximum length of 6 meter and an inner diameter between 4" (100mm) and 12" (300mm).

For longer hoses, at least two wide support slings per hose must be used.

Never use conventional rope as a sling for a composite hose as severe hose damage will be the result.

Code number	CTSHS 4	CTSHS 6	CTSHS 8	CTSHS 10	CTSHS 12
Hose diameter	4"	6"	8"	10"	12"
Max. hose length	6m (20ft)	6m (20ft)	6m (20ft)	6m (20ft)	6m (20ft)



WIDE SUPPORT HOSE BUNS

CTS hose buns are composed of a red polymer and are used with latex-treated yellow web slings uniquely engineered for each specific model of hose bun. Sling rated capacities are established using a 5:1 safety factor. All slings are used in a choker hitch position to eliminate hose slippage.

Never use conventional rope as a sling for a composite hose as severe hose damage will be the result.

Hose size	3"	4"	6"	8"	10"
Hose bun model	HB300	HB400	HB600	HB800	HB1000
Length (inches)	9.8	11.5	21.5	30.0	41.0
Weight (lbs)	2.50	3.75	13.75	29.75	53.00
Sling width (inches)	1.75	1.75	4.00	6.00	8.00
Sling length (inches)	30.5	34.5	39.0	50.0	62.0
Rated capacity (lbs)	1,500	1,500	8,000	12,000	15,000
Length (mm)	241	292	546	762	1041
Weight (kg)	1.13	1.70	6.24	13.50	24.06
Sling width (mm)	44	44	102	153	204
Sling length (mm)	775	876	991	1270	1575
Rated capacity (kg)	680	680	3,635	5,450	6,810



Offices:
Coventrystraat 2
3047 AD Rotterdam
The Netherlands

Tel.: +31 (0)10 - 2622160
Fax: +31 (0)10 - 2622190
E-mail: info@cargotransfer.net
Website: www.cargotransfer.net

Your distributor: